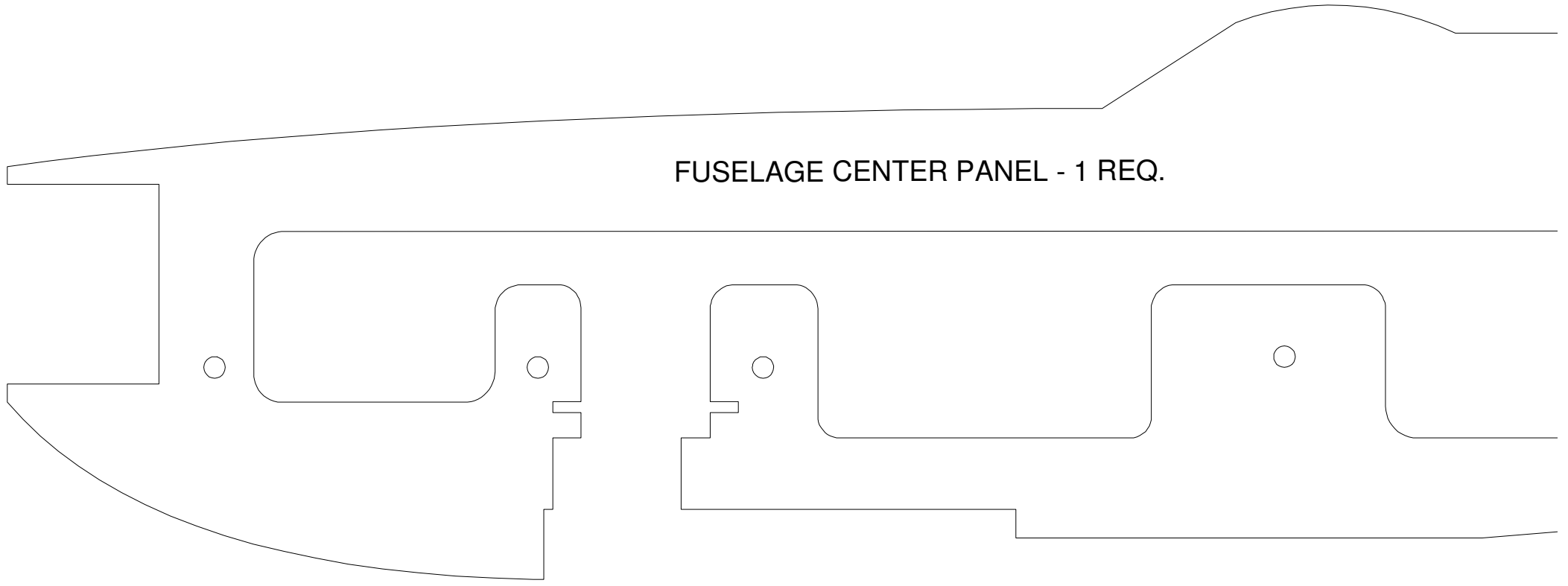
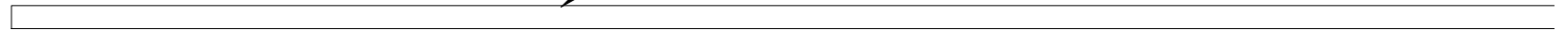
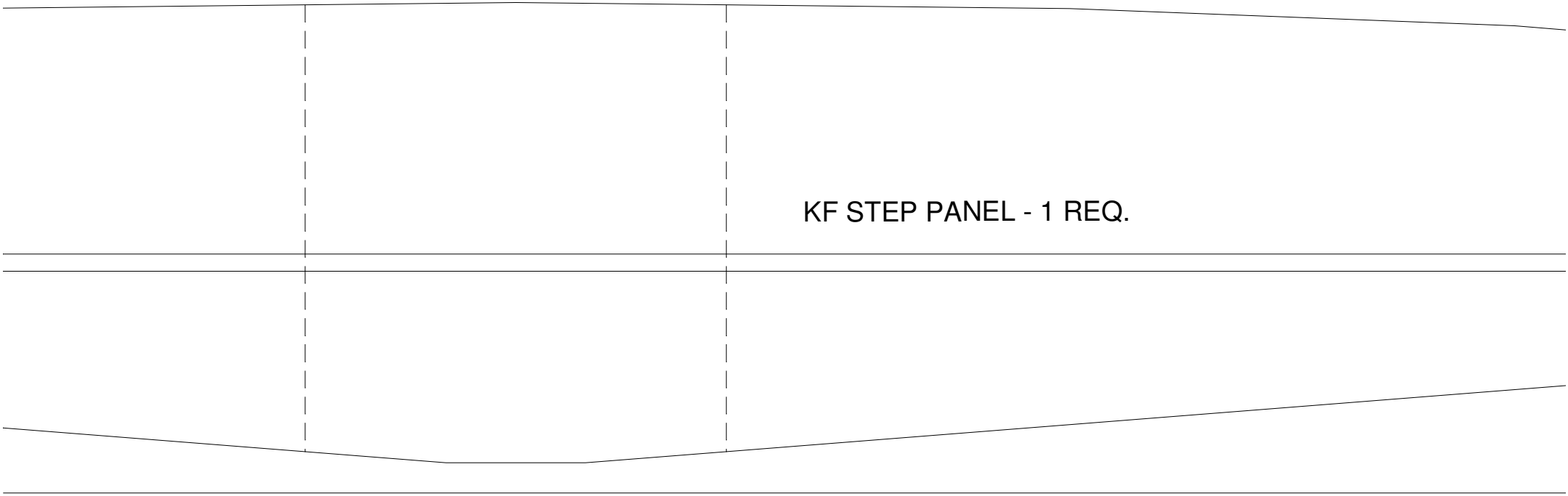
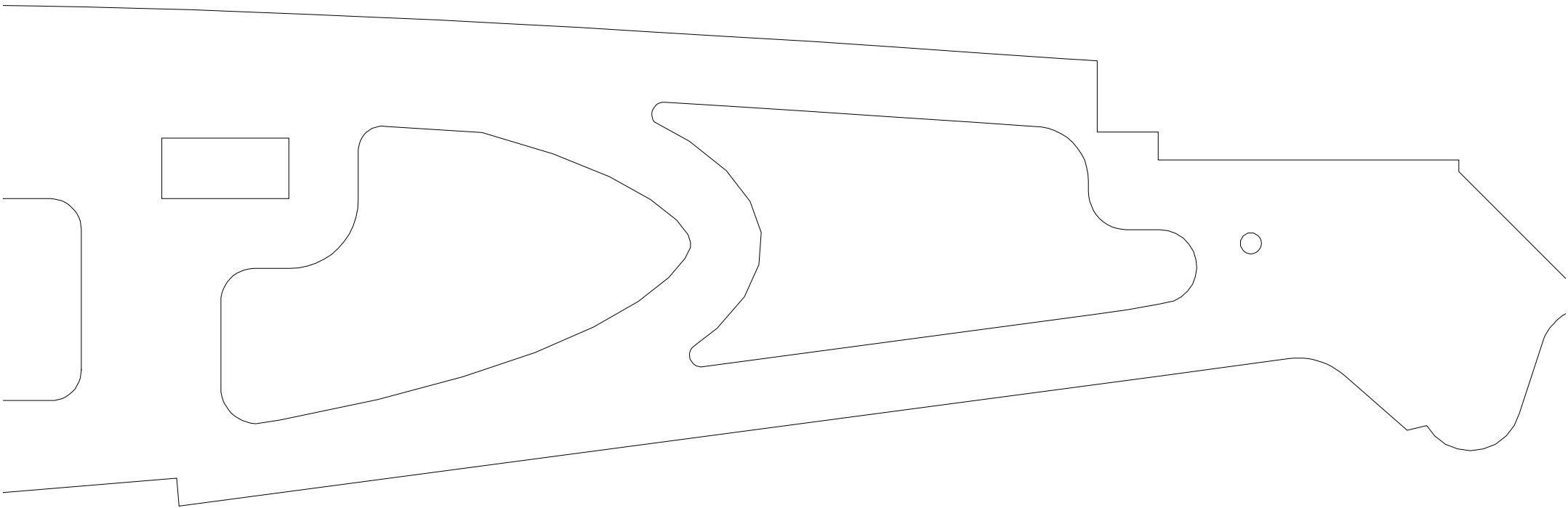


FUSELAGE CENTER PANEL - 1 REQ.

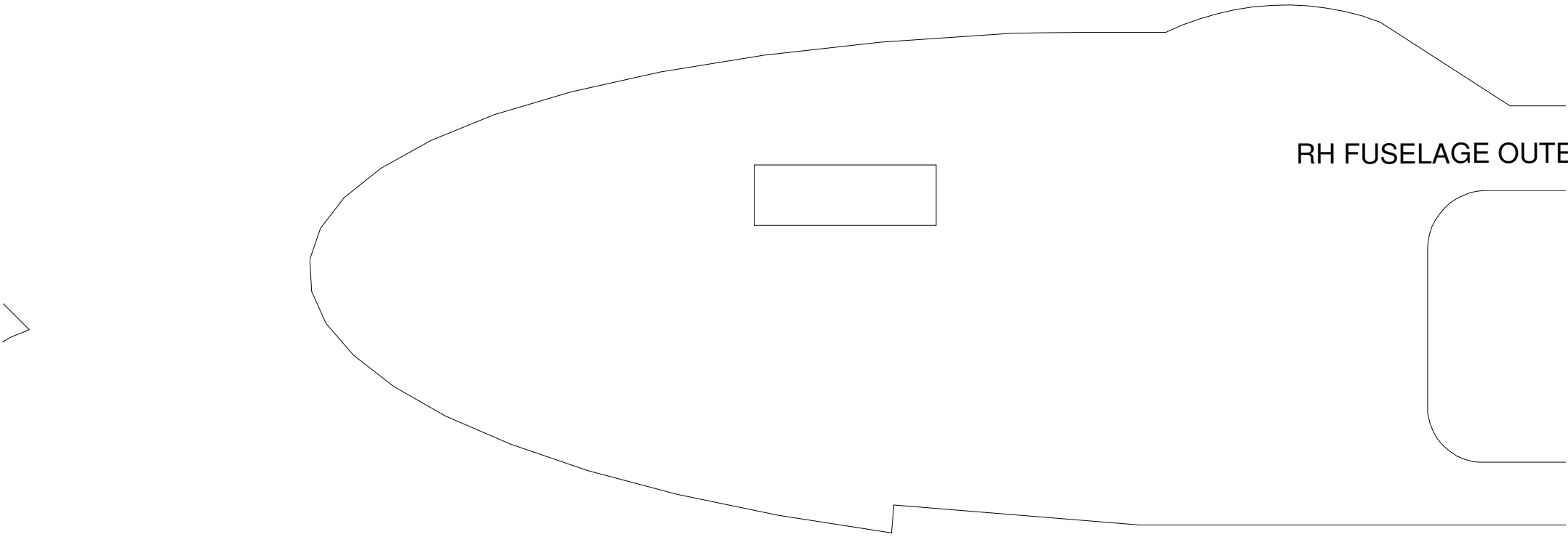


1/8" X 24" SPAR CAVITY
SPAR MAY BE WOOD
DOWEL OR CARBON FIBER

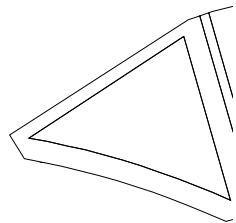
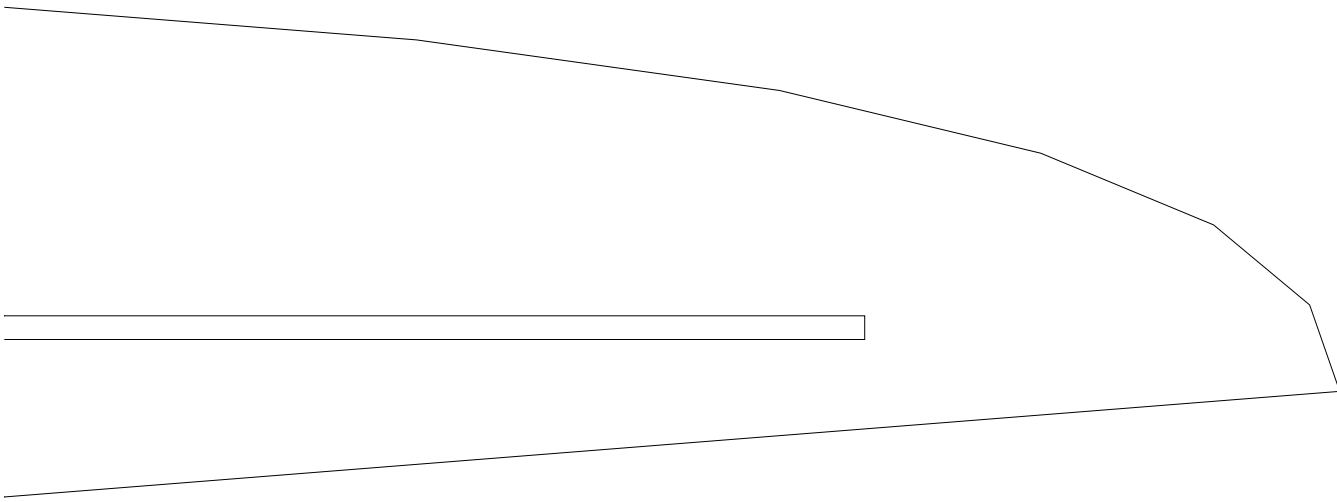




KF STEP PANEL - 1 REQ.

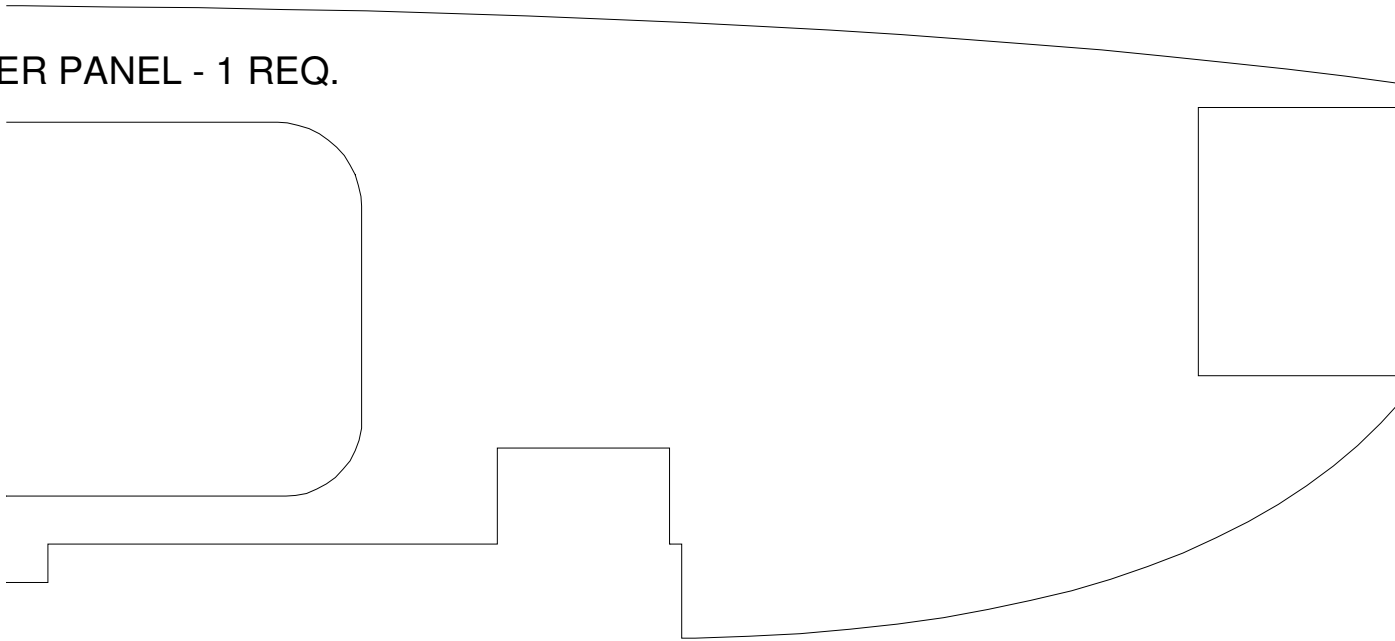


RH FUSELAGE OUTER

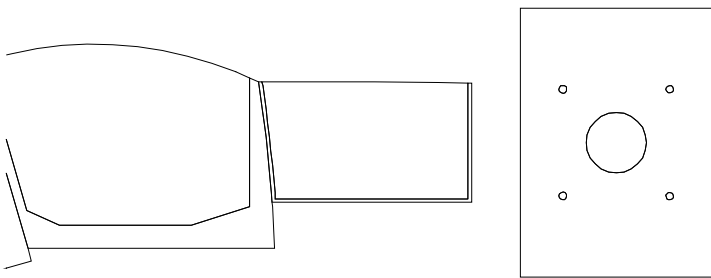


CANOP

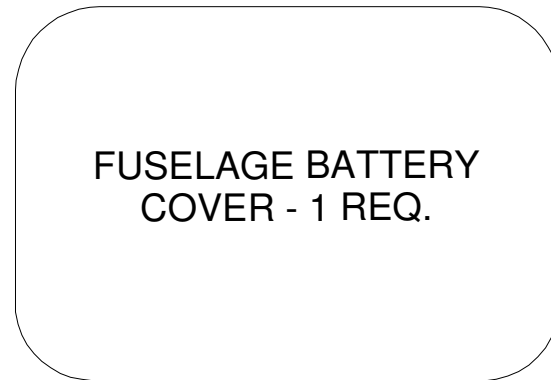
OUTER PANEL - 1 REQ.



FIREWALL 1/8" PLY - 1 REQ.



CANOPY TEMPLATE

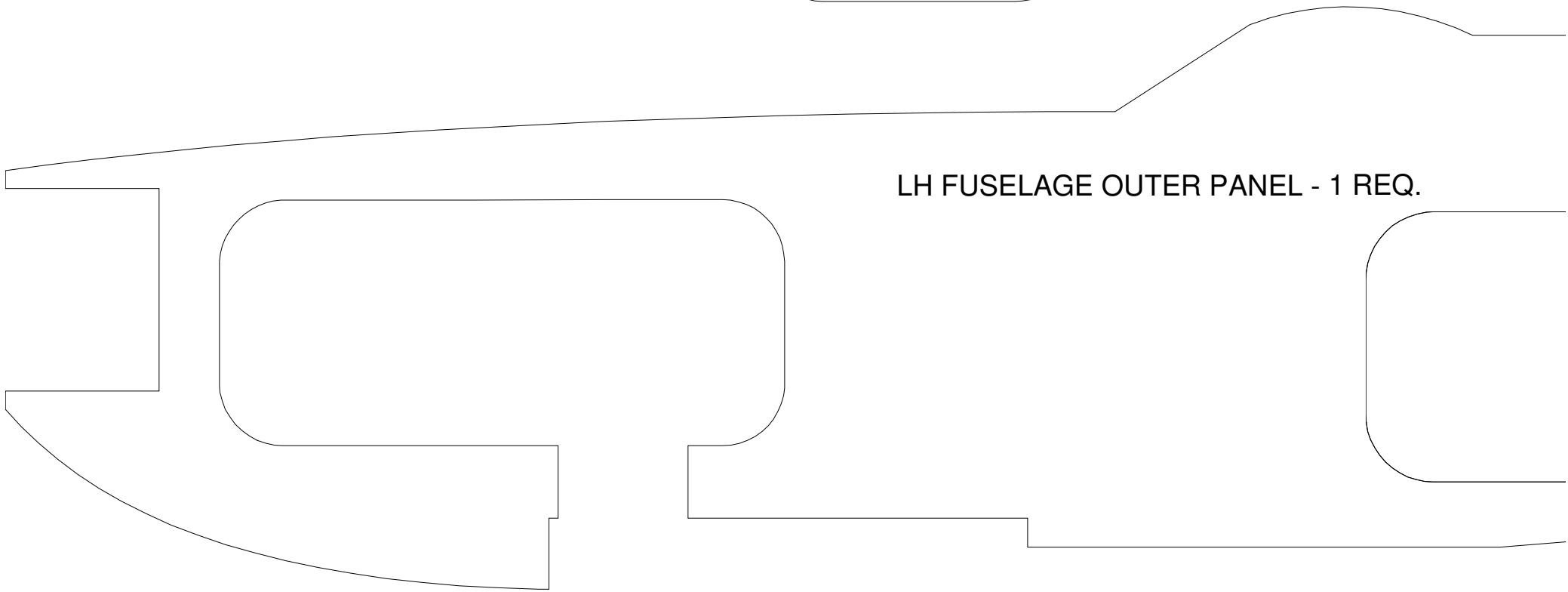


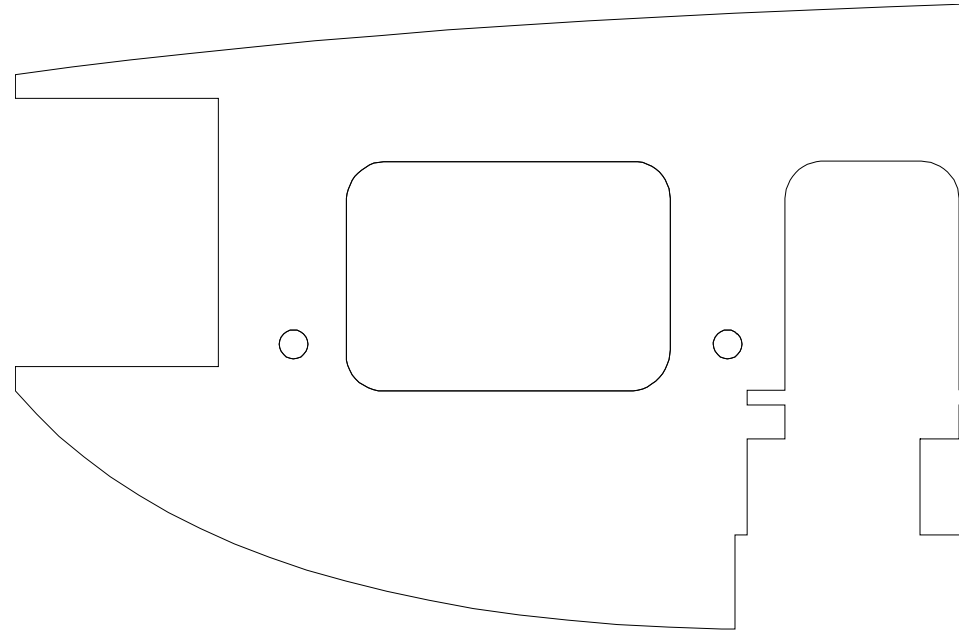
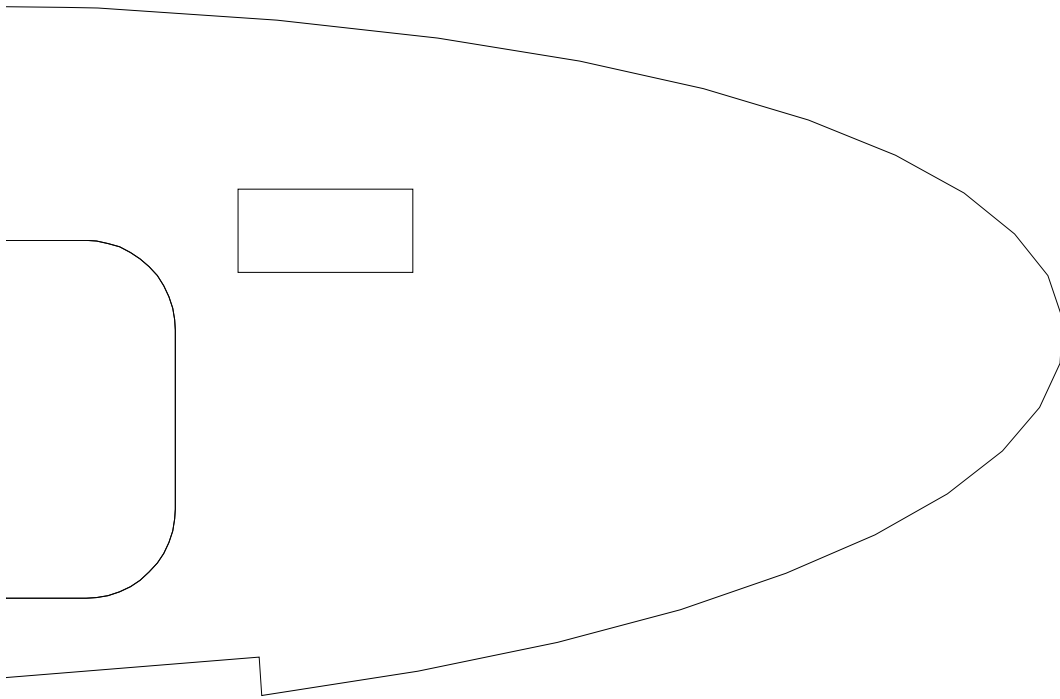
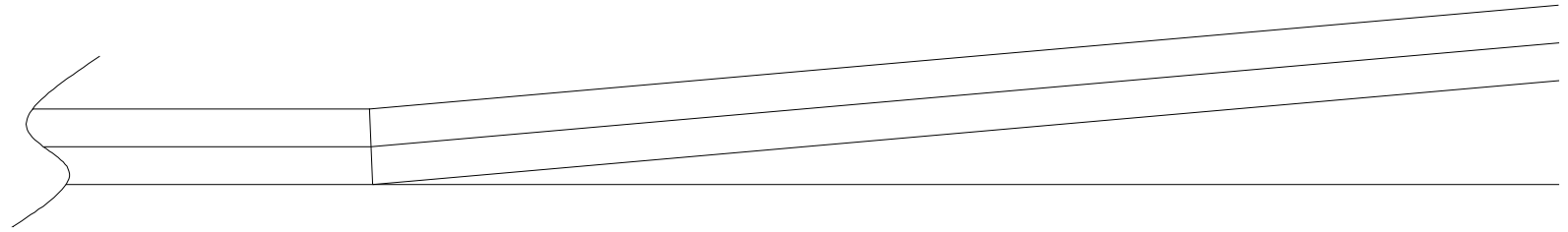
FUSELAGE BATTERY
COVER - 1 REQ.

FUSELAGE ESC/SERVO
COVER - 1 REQ.

FUSELAGE RX
COVER - 1 REQ.

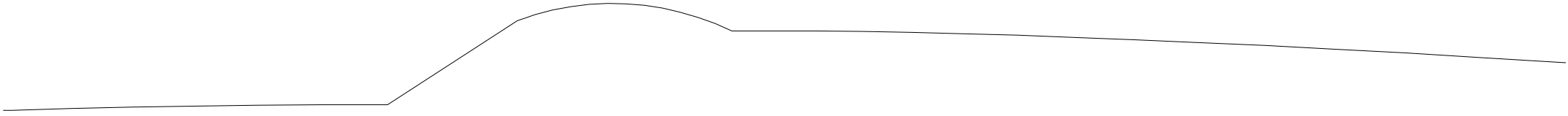
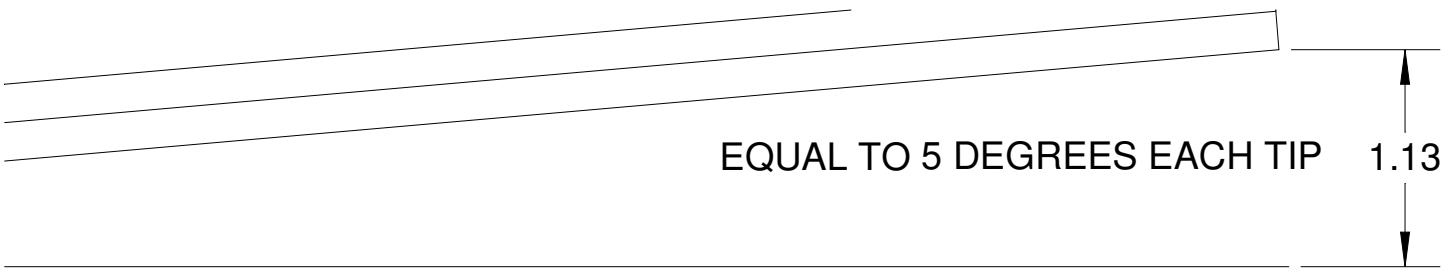
LH FUSELAGE OUTER PANEL - 1 REQ.



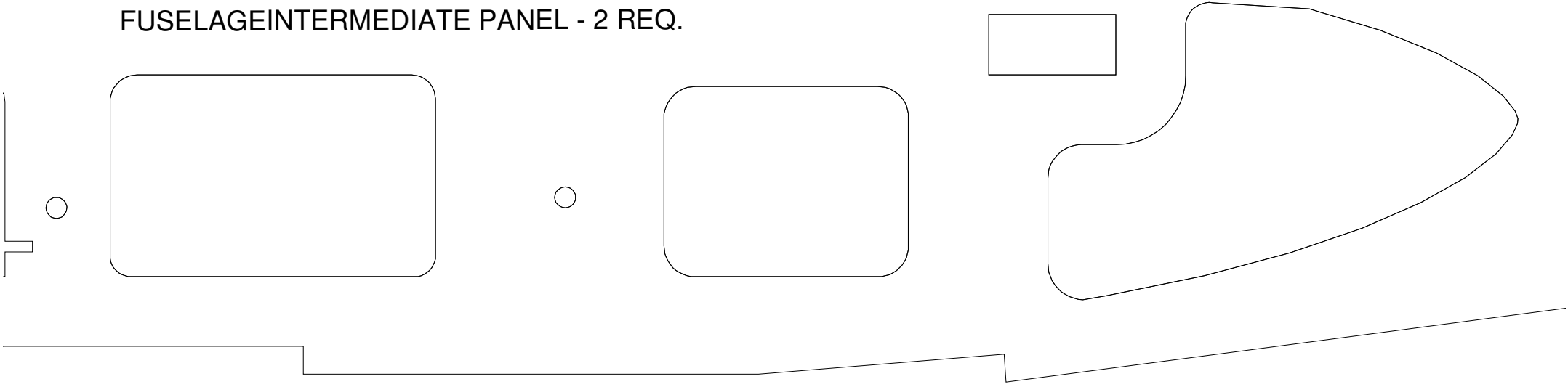


ALIGNMENT PIN HOLES - USE IF DESIRED
SIZED FOR BAMBOO SKEWER MATERIAL
FOR KEEPING PANELS ALIGNED WHILE GLUEING





FUSELAGE INTERMEDIATE PANEL - 2 REQ.



AIR INTAKE PANEL - 3 REQ.



SPITFIRE

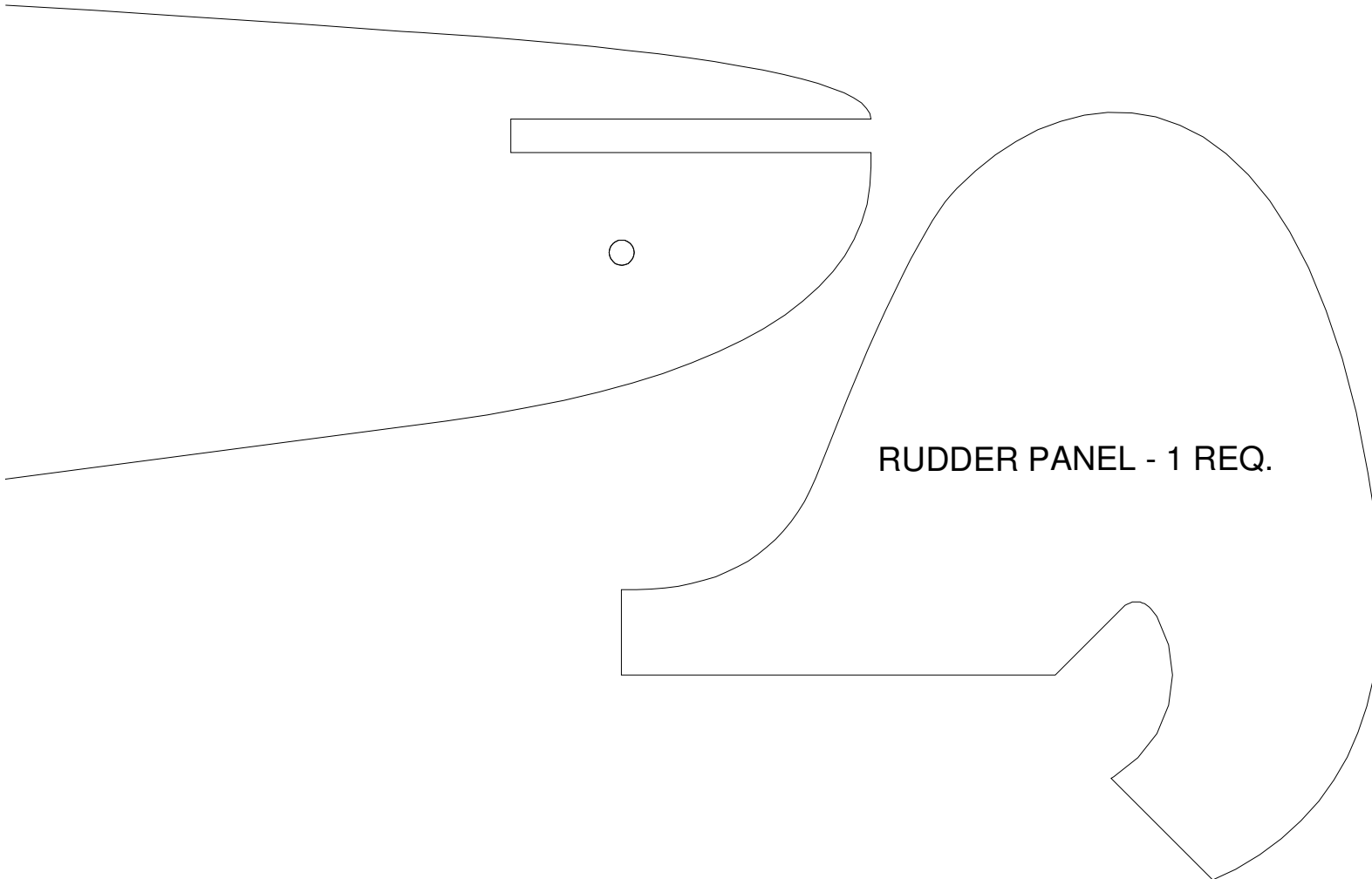
SEMFF COMBAT PLANE

DESIGNED BY DZ1SFB ON RCGROUPS.COM

FOR NON COMMERCIAL USE ONLY

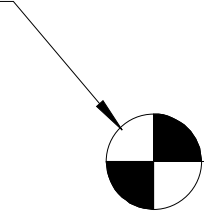
RELEASED 25-APR-2010

VERSION 2 RELEASED 07-AUG-2010

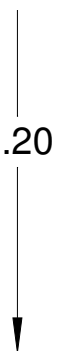




CENTER OF GRAVITY



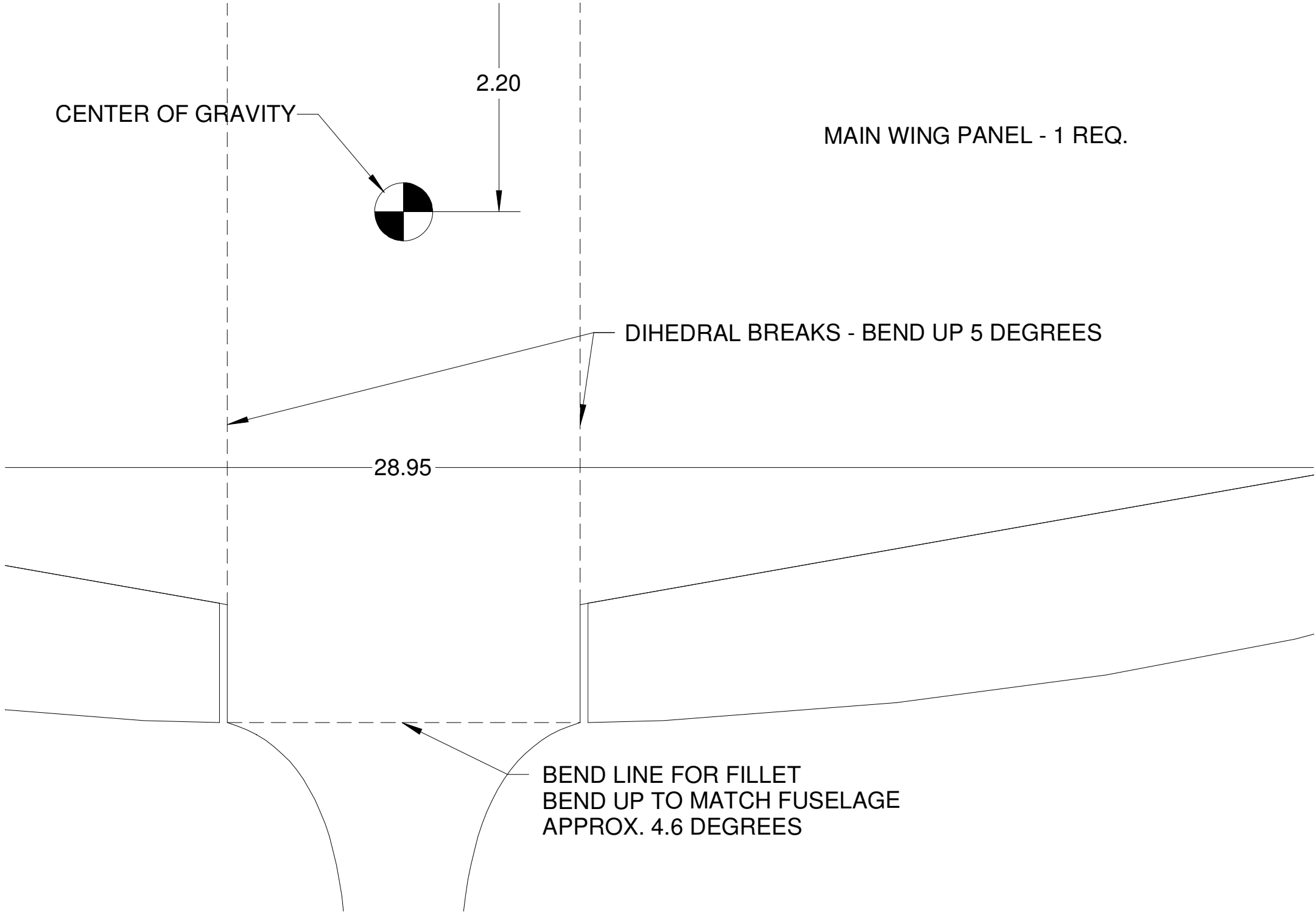
2.20



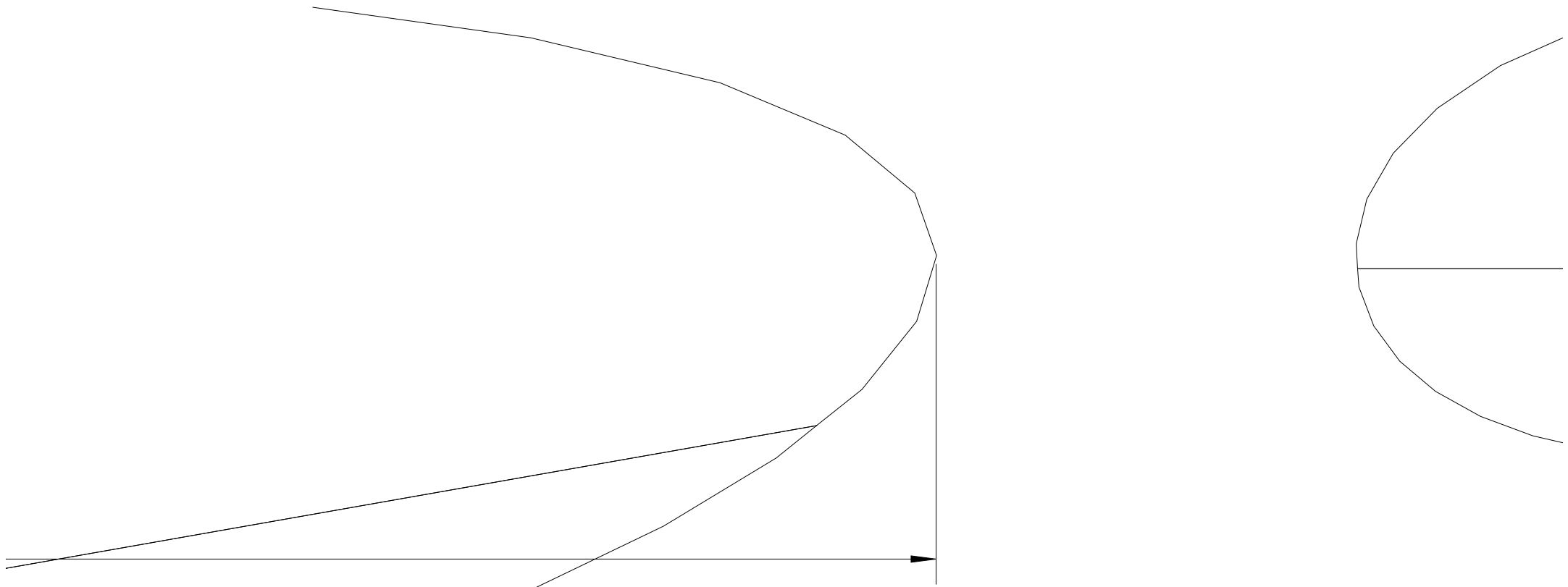
MAIN WING PANEL - 1 REQ.

DIHEDRAL BREAKS - BEND UP 5 DEGREES

28.95



BEND LINE FOR FILLET
BEND UP TO MATCH FUSELAGE
APPROX. 4.6 DEGREES



EQUIPMENT SPECIFICATIONS:

MOTOR; BLUE WONDER 1700 KV

SERVOS: HXT 9G (2)

BATTERY: 900 MAH 2S

MATERIAL SPECIFICATIONS:

ALL MATERIAL IS DOW PROTECTION
BOARD III UNLESS OTHERWISE SPEC'D





HORIZONTAL TAIL ASSEMBLY - 1 REQ.

OPTIONAL
RADIATOR LOWER
PANEL - 2 REQ.

OPTIONAL RADIATOR
SIDE PANEL - 4 REQ.

SPITFIRE

